

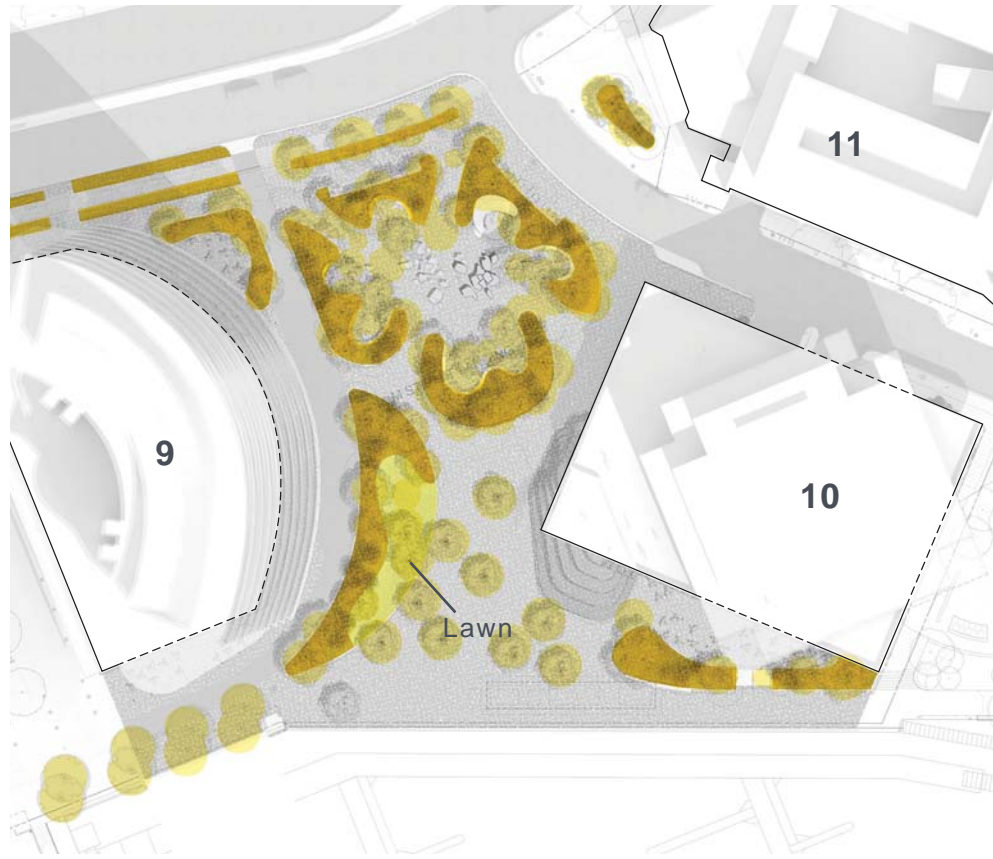


DISTRICT
WHARF

M Street Landing: Perspective View of Fountain Plaza

Z.C. 11-03J | HEARING #1 | NOVEMBER 2, 2017

95
ZONING COMMISSION
District of Columbia
CASE NO. 11-03J
EXHIBIT NO. 40A6
(3.6)

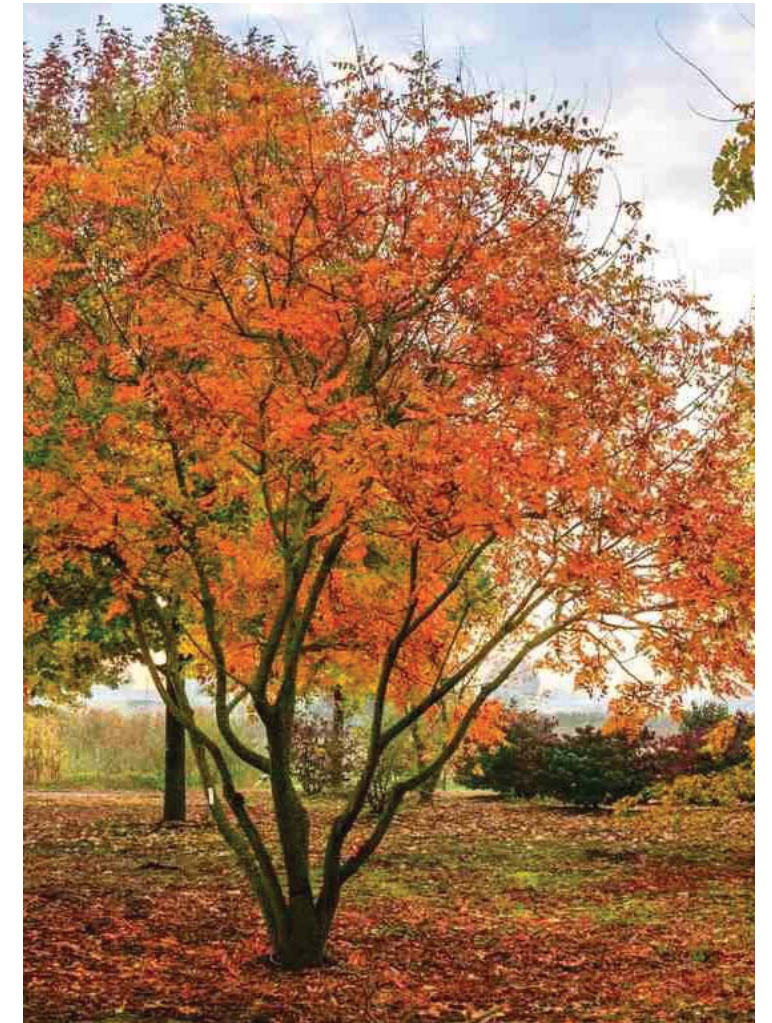


PLANTING

A multi-season plant palette will enliven the space and offer different experiences by season. High canopy, broad-leafed trees such as Catalpa will cool shade in the summer. Strong fall colors for deciduous trees such ginkgo and spicebush, among others, will complement the consistent colors and varied textures of evergreens, including Chinese juniper and sweetbay magnolia. Different varieties of winter blooming witch hazel and showy summer blooming plants such as fothergilla and golden raintree will also contribute to the sense that the landscape offers something special to see in every season.



Carpinus betulus 'Fastigiata'



Koelruteria paniculata



Hamamelis jelena



Viburnum rhytidophylloides



Catalpa speciosa



Ginkgo biloba



Magnolia virginiana 'Green Shadow'



Juniperus chinensis 'Torulosa'



Fothergilla x intermedia 'Mount Airy'



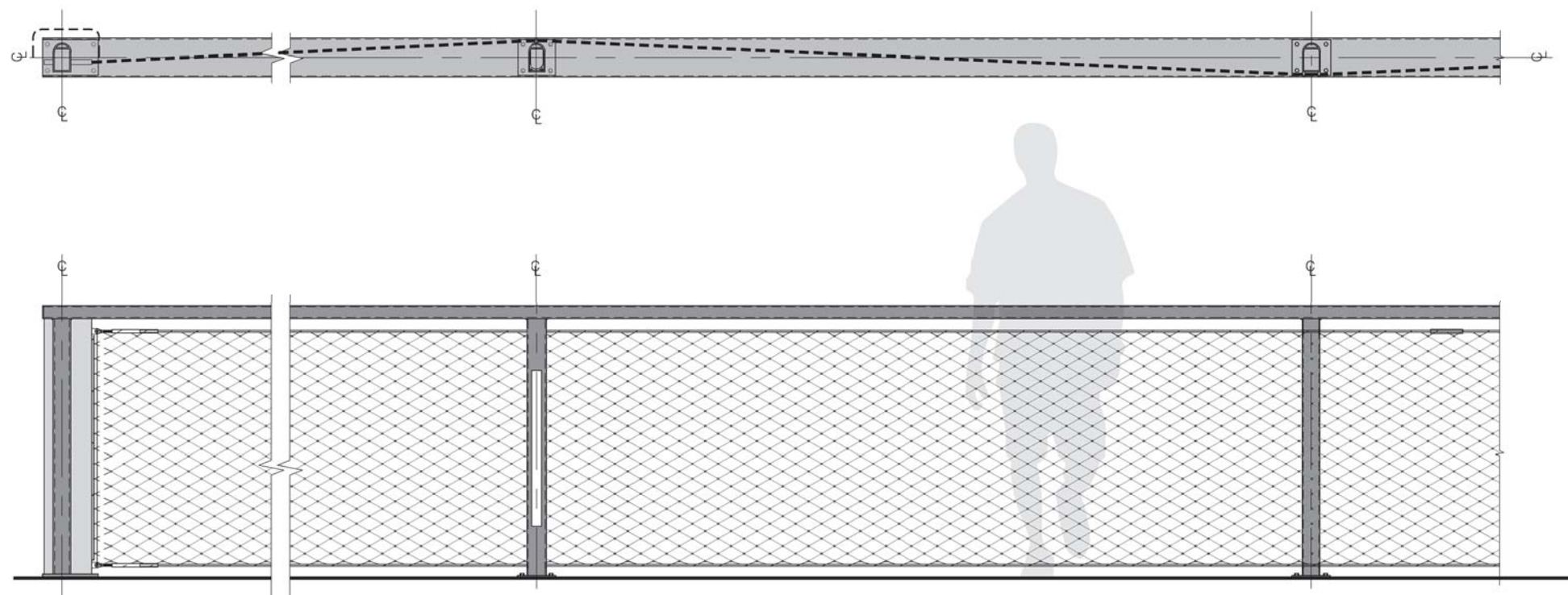
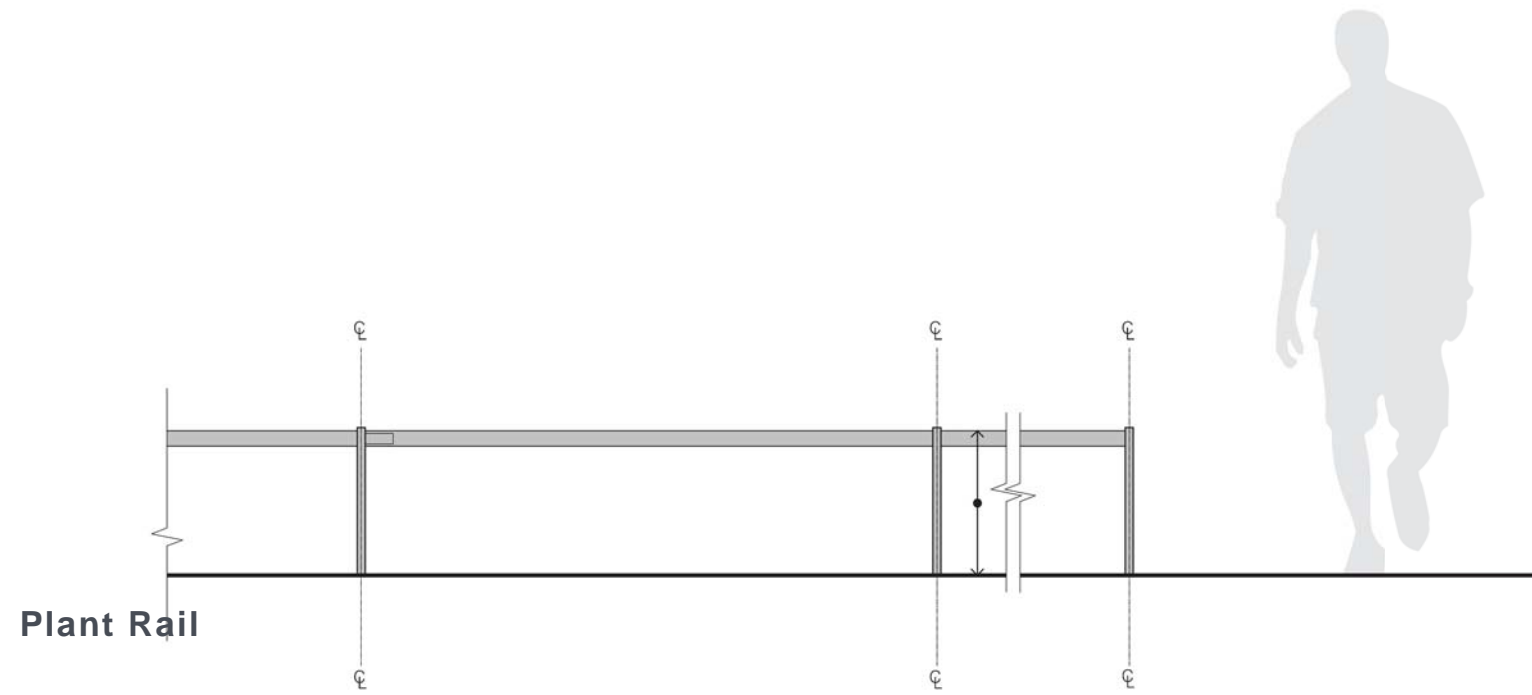
Hamamelis intermedia 'Arnold Promise'



Callicarpa americana



Lindera glauca





Litter and Recycling



Bike Rack



Precast Concrete Benches



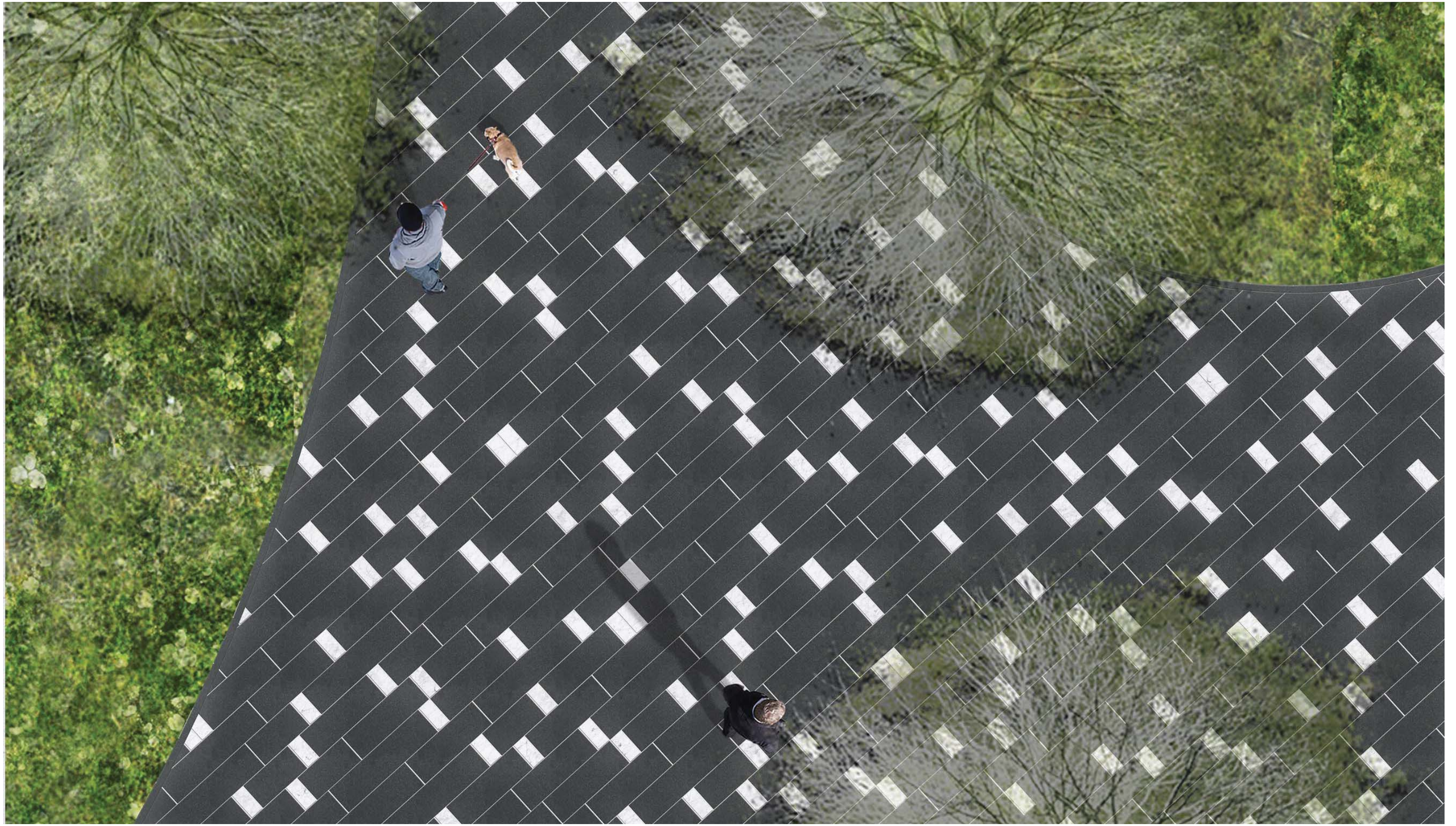
Bollard

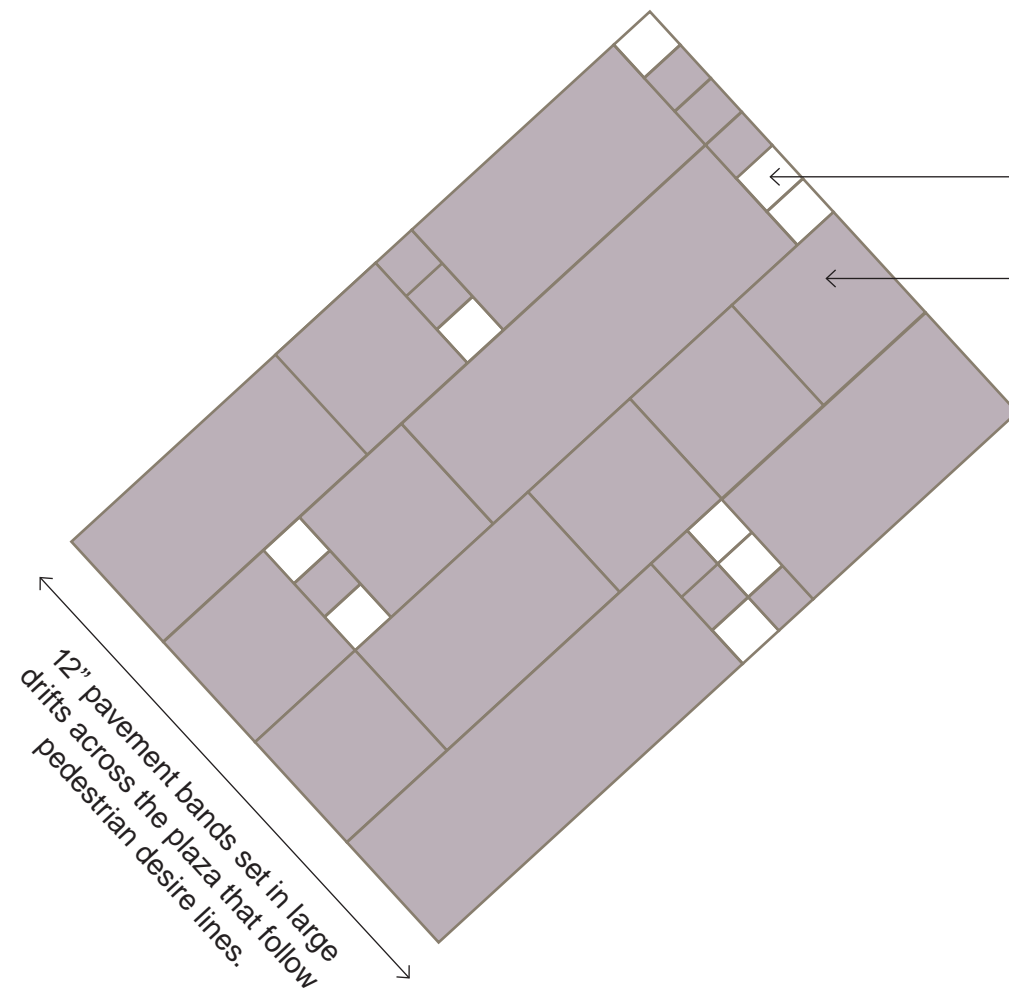


Capital Bikeshare



Movable Chairs and Tables

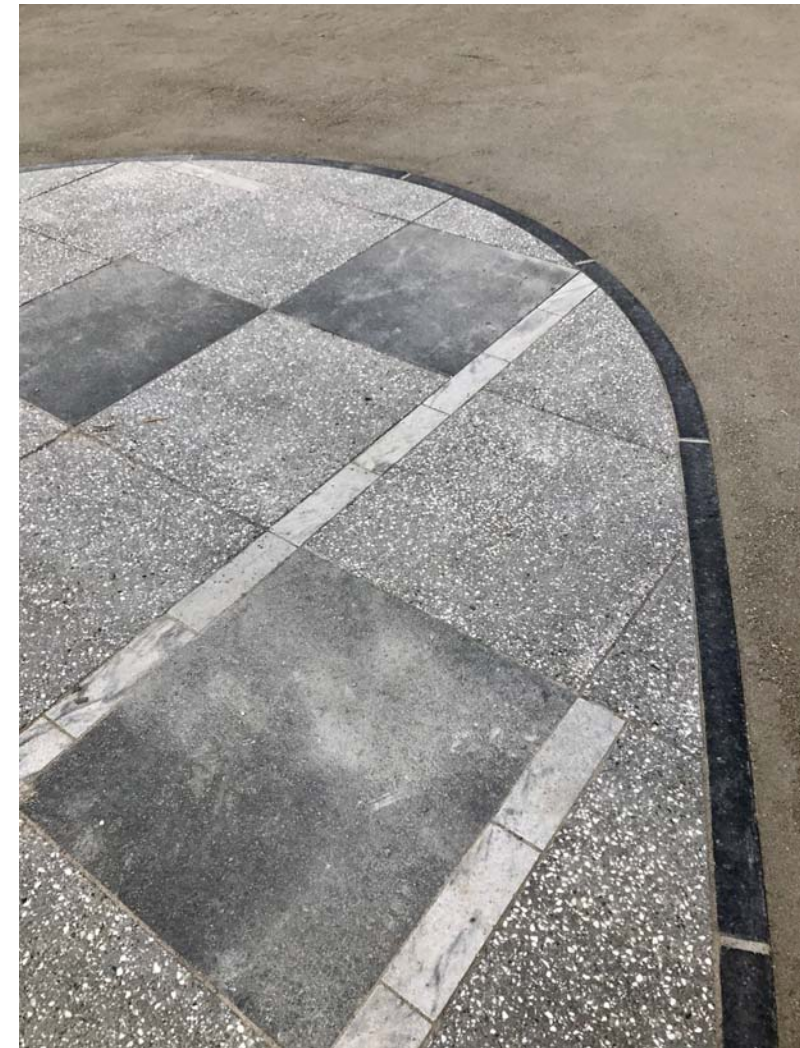




12" pavement bands set in large drifts across the plaza that follow pedestrian desire lines.

4"x4" Marble and Concrete Paver Setts

12"x12" Concrete Paver with custom aggregate mix. The concrete pavers would be fabricated in three different lengths (12"x12", 12"x24" and 12"x36").



PAVEMENT PRECEDENT

Concrete pavers with exposed aggregate finish complements the marble setts. The pavement is designed with a concrete base so that it is durable for high volume pedestrian and limited vehicular traffic.





APPLICANT'S PRESENTATION - VOLUME C

NOVEMBER 2, 2017 | PARCEL 10, WATER BUILDING 3, M STREET LANDING, THE TERRACE, WHARF MARINA



DISTRICT
WHARF

HOFFMAN-MADISON WATERFRONT